

My Vision:

To achieve excellence in local policing and the highest levels of public confidence by working alongside communities and partners to address what matters locally.

[Click on each box to see how the Constabulary is performing](#)



Placing the current performance in context, what does the Constabulary's performance look like?

I monitor force performance by measuring:

Victim Based Crime Statistics:
Desired outcome: Fewer crimes and therefore fewer victims of crime

Public Confidence:
Desired outcome: Improved levels of public confidence

Victim Satisfaction:
Desired outcome: Increased victim satisfaction

and my personal and community priorities:

Personal Priority 1 –
To reduce the impact of domestic abuse, particularly violence against women and girls

Personal Priority 2 –
To reduce the impact of hate crime

Personal Priority 3 –
Improve engagement with local communities across the Constabulary area

Community Priority 1 –
To tackle anti-social behaviour

Community Priority 2 –
To tackle the harm caused to individuals and communities by alcohol and drugs

Community Priority 3 –
To improve road safety by tackling careless and dangerous driving, speeding and other related road safety issues

Community Priority 4 –
To make our policing service visible and accessible at all times

Overall Outcome

High Quality Policing

The emoticons represent my verdict on police performance. See [glossary](#) for more details

Recent Performance

- Durham Constabulary covers both County Durham and Darlington, an area with a population of around 623,000 people
- Below shows an approximation of how things have changed in the last 5 years:

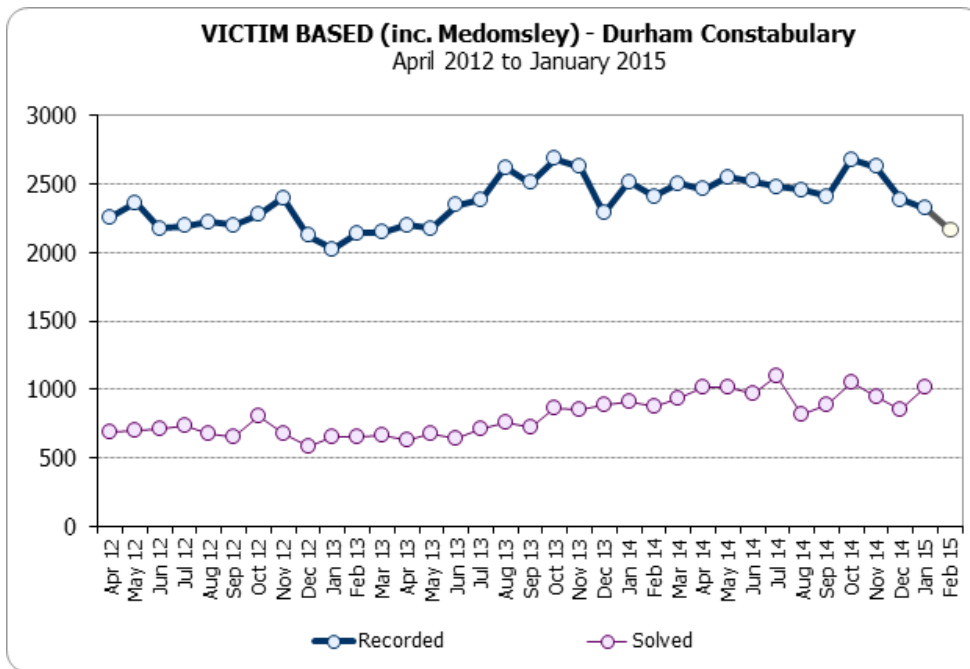
	<u>2009</u>	<u>2014</u>	
<u>Staff Numbers</u>			
• Police Officers	• 1578	• 1200	• - 378
• PCSOs	• 170	• 155	• - 15
• Police Staff	• 930	• 800	• - 130
<u>Crimes</u>			
• Overall Crime	• 42,000	• 33,000	• - 22%
• Burglary Dwelling	• 2,500	• 1,350	• - 44.8%
• Theft from a Motor Vehicle	• 3,000	• 2,000	• - 33%
• Violence Against the Person	• 7,000	• 6,400	• - 8%
• Shoplifting	• 3,200	• 3,600	• + 14%
<u>Confidence</u>	• 53%	• 73%	• +20%
<u>Victim Satisfaction</u>			
• Actions Taken	• 79%	• 89%	• + 10%
• Follow Up	• 68%	• 84%	• +16%
• Whole Experience	• 82%	• 89%	• + 7%

Next Page

Return to Main Screen

Police and Crime Plan Primary Measure: [Victim Based Crime Statistics](#)

	12 months to end January 2013	12 months to end January 2014	Difference 2013-2014	% Difference	12 months to end January 2015	Difference 2014-2015	% Difference	PCC Verdict
Victim based crime	27,307	28,650	+ 1343	+ 4.9 %	29,824	1174	+ 4.1 %	☹️



We are experiencing increases in crime in areas such as shop lifting. Specific detailed analysis is being undertaken by the Constabulary to better understand who, how and why this crime type is increasing. My initial conclusions are that due to the continued period of austerity, and changes to the benefit system, we are finding that an increasing number of people are ‘stealing’ to live.

In addition, recorded crime is higher because it is being reported more, which is positive. This is particularly the case for domestic abuse and sexual offences. It also includes the [Medomsley Case](#) which, despite being historic, each incident is recorded within the figures for the month that it was reported in. Victims of other historical abuse offences are now also coming forward following high-profile revelations across the country.

Overall we are hoping to see current performance maintained at financial year end. Currently predictions are a small increase, however this again includes Medomsley. I am assured that the Constabulary is continuing to tackle crime and feel that the projected increase is fair due to the current climate. I will be closely monitoring performance on this as we move forward.

A further break down by crime type is available under ‘High Quality Policing’, later on in this report. [Click here](#) to go to this section

Next Page

Return to Main Screen

Police and Crime Plan Primary Measure: Public Confidence

Public Confidence (CSEW)	12 months to end of June 2014	12 months to end of Sept 2014	Difference
'taking everything into account I have confidence in the police'	76 %	76 %	0
% of people who think the police do a good job	63 %	63 %	0

Local Survey	Quarter 1	Quarter 2	% Difference	Quarter 3	% Difference	PCC Verdict
'taking everything into account I have confidence in the police'	76 %	73 %	- 3 %	71 %	- 2 %	☹️
% of people who think the police do a good job	72 %	70 %	- 2 %	69 %	- 1 %	☹️

**You will note that the time periods for the local survey indicators above are not fully comparable, as we are comparing slightly different time periods, however this is the only data that we have available to us at this time. [CSEW= Crime Survey for England and Wales](#).*

The Constabulary has been focusing on increasing confidence. I am satisfied that the confidence delivery plans, which target activity within the three strands of Community Engagement, Police Effectiveness and Service Behaviour, are now coming to fruition. I am delighted with the success that the Constabulary is seeing with initiatives such as [“Park, Walk and Talk”](#) and [“Mutual Gain”](#). I am not concerned by the slight drop as I know the work going on will most likely have a positive impact on future data, with the latest local survey in December 2014 showing confidence levels at **79%**. Although I feel we need to monitor the percentage of people who think the police are doing a good job due to the slight decline, it is important to notice that local statistics are still higher than nationally.

It is important that the public have confidence in the police as it increases feelings of safety and also the likelihood they will report a crime. Due to this importance, I have proposed to make increasing public confidence one of my key priorities in my refreshed Police and Crime Plan in April 2015, which is currently out for public consultation.

[Next Page](#)

[Return to Main Screen](#)

Police and Crime Plan Primary Measure: Victim Satisfaction

Victim Satisfaction*	12 months to Dec'13	12 months to Dec'14	% Difference	PCC Verdict
Whole Experience	89%	89%	0	☹️
Ease of Contact	97%	97%	0	😊
Arrival Time	89%	89%	0	☹️
Actions Taken	89%	89%	0	☹️
Follow Up	85%	84%	-1%	☹️
Treatment	97%	95%	-2%	☹️

*Percentages are determined through a local victim satisfaction survey by Durham Constabulary with results collated quarterly.

Overall satisfaction rates are high, and this is a credit to the Constabulary. I am pleased to be able to report high satisfaction scores across the board, particularly for 'ease of contact' and 'treatment'.

Whilst satisfaction with the Whole Experience, Arrival Time and Follow Up are high, the Constabulary should work on these aspects to bring all the elements of Victim Satisfaction to similarly high levels.

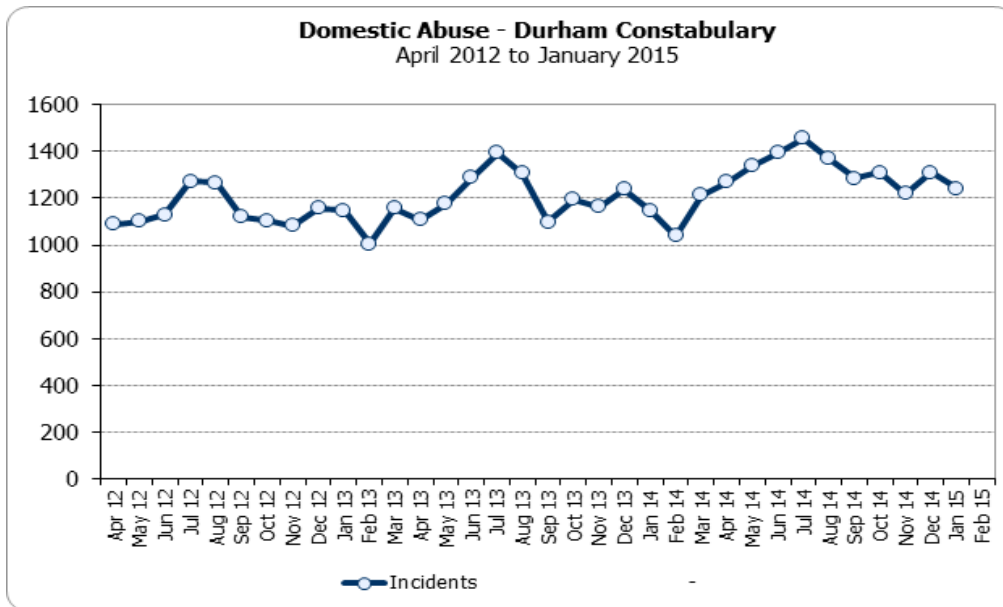
[Next Page](#)

[Return to Main Screen](#)

Personal Priority 1 – To Reduce the Impact of Domestic Abuse, Particularly Violence Against Women and Girls

	12 months to end January 2013	12 months to end January 2014	% Difference 2013-2014	12 months to end January 2015	% Difference 2014-2015	PCC Verdict
Domestic Abuse*	13,606	14,286	+ 5%	15,455	+ 8.2%	😊

* These are cases that have been flagged with the Domestic Abuse qualifier as Domestic Abuse is not a criminal offence in itself by law



There has been a lot of work by myself, my regional counterparts, the Constabulary and our local partners to increase awareness around Domestic Abuse. As well as looking to reduce offending, the aim is also to help victims feel confident enough to report and for them to get the service they need. The force recently launched a new “Sorry is not enough” campaign aimed at increasing awareness of domestic abuse and the help available, with the aim to increase reporting.

The increase in reported incidents shown in the table above is encouraging, as it shows more victims are reporting to the police.

The [HMIC](#) inspection in April 2014 of police responses to Domestic Abuse at all forces across the country was extremely positive for Durham Constabulary. They were commended as being one of only eight forces who have been deemed as doing a good job in this area.

A national award was presented to one of Durham’s officers for her outstanding work with a victim of domestic violence, in which she went above and beyond what the public might expect are the normal duties of an officer.

[Next Page](#)

[Return to Main Screen](#)

Personal Priority 2 – To Reduce the Impact of Hate Crime

A Hate Crime is a crime that is targeted at a specific person or group due to a prejudice against certain characteristics. These protected characteristics are: disability, race or ethnicity, religion, sexual orientation and gender identity. Durham Constabulary, with my support, has also added alternative lifestyle to this list.

Crime Type	12 months to end January 2013	12 months to end January 2014	% Difference 2013-2014	12 months to end January 2015	% Difference 2014-2015	PCC Verdict
Overall Hate Incidents	309	360	+ 16.5 %	378	+ 5%	😊
Racial Prejudice Incidents	207	260	+ 25.6 %	257	- 1.2%	😊

Overall Hate Crime incident statistics are generated using protective characteristic qualifiers that are attached by the handler to the case, as they are not all individual criminal offences. Racial prejudice accounts for a large percentage of the overall figures.

It is positive to see the reported incidents increasing, especially those characteristics other than race, as these are an under-reported and less recognised area of crime. I am confident that an increase in the figures represents a rise in the confidence of victims to come forward, not an increase in the occurrence of the crime. This could also be evidence of a more accurate recording of hate crime types.

Durham Constabulary is focusing on the levels of service these victims receive, with satisfaction surveys being completed. However, numbers are so low, especially with those hate crimes that are not associated with racial prejudice, they have not yet gathered sufficient data to be able to generalise results across the Constabulary. I have been assured that they will continue to monitor the satisfaction surveys to ensure these victims are consistently receiving optimum service levels. I hope to be able to bring you data on this in the next few months.

[Next Page](#)

[Return to Main Screen](#)

Personal Priority 3 – Improve Engagement with Local Communities Across the Constabulary Area

I attend many events and hold my own engagement activities with the community. Below are some of the key examples of places I have been. I keep track of my engagement to ensure I travel across the whole of the area and allow all residents the chance to attend a local meeting with me and have a voice.



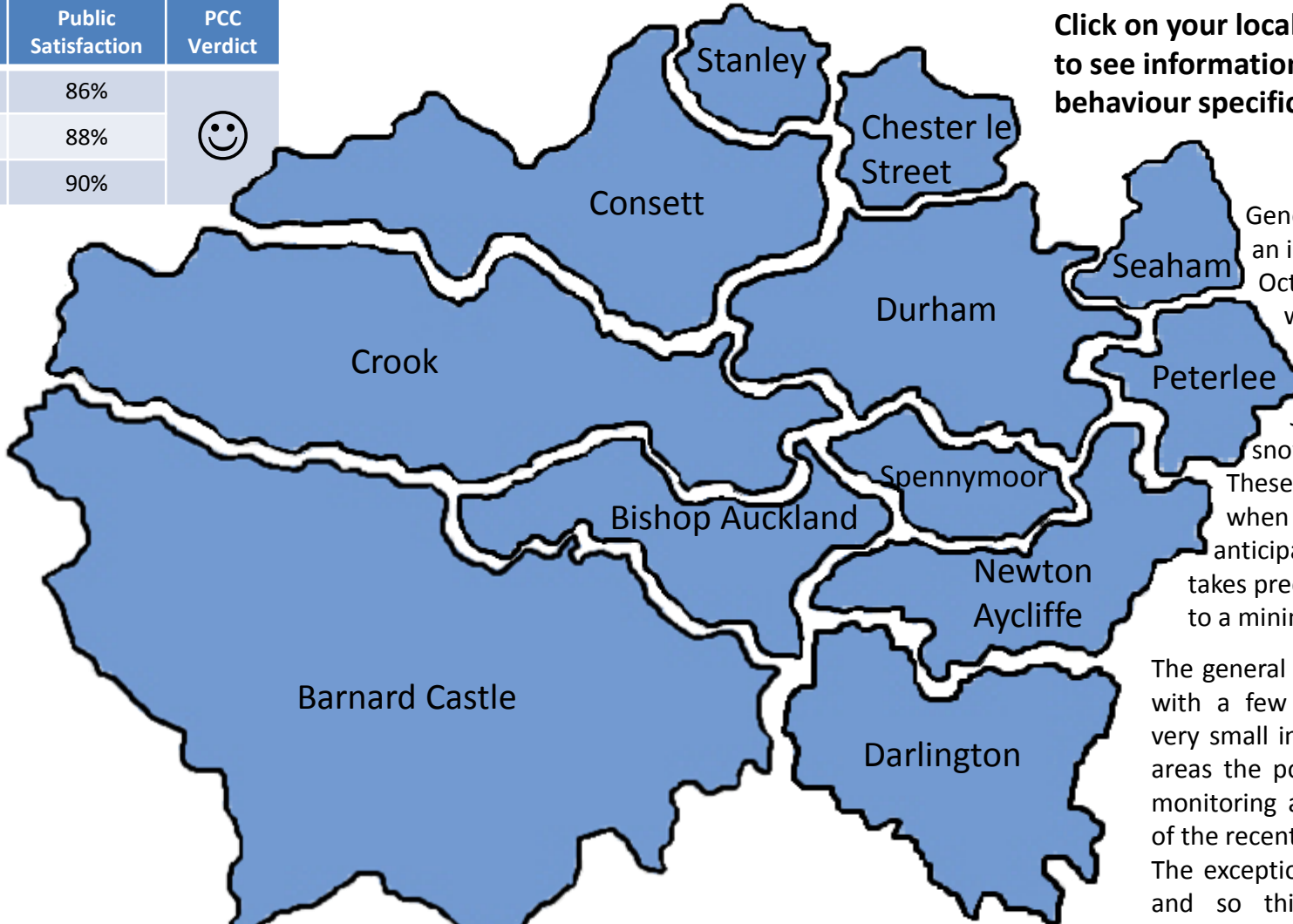
[Next Page](#)

[Return to Main Screen](#)

Community Priority 1 – To Tackle [Anti-Social Behaviour](#)

	Public Satisfaction	PCC Verdict
Quarter 1	86%	😊
Quarter 2	88%	
Quarter 3	90%	

Click on your local policing sector to see information on anti-social behaviour specific to your area.



General patterns show an increase around October/November, which coincides with Halloween and Bonfire Night, and January due to the snow and snowballing. These are particular times when the Constabulary anticipates an increase and takes precautions to keep it to a minimum.

The general trend is a decline, with a few areas showing a very small increase. These are areas the police are currently monitoring as they are aware of the recent change. The exception is Durham City, and so this area is being focused on to see what actions can be taken.

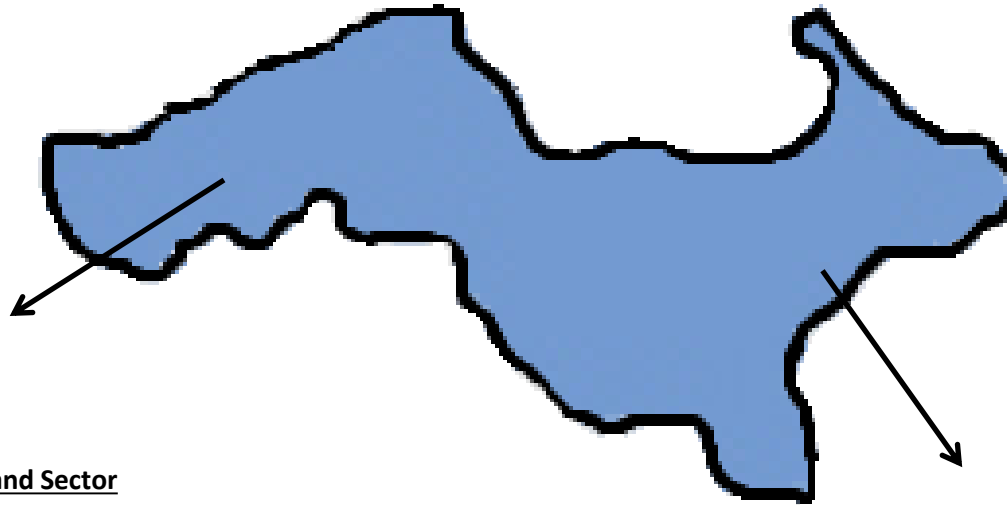
	12 months to end January 2014	12 months to end January 2015	Difference	PCC Verdict
Anti Social Behaviour	29,419	29,101	- 1.1%	😊

[Next Page](#)

[Return to Main Screen](#)

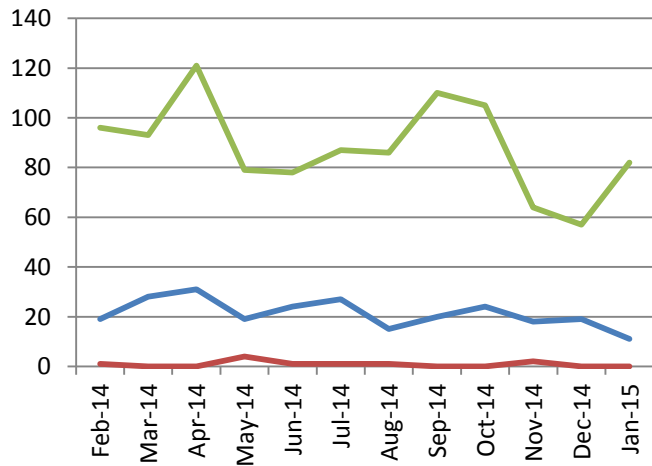
Community Priority 1 – To Tackle Anti-Social Behaviour

Bishop Auckland



- Alcohol Related
- Drugs Related
- Youth Related

Bishop Auckland Sector



	12 months to end January 2014	12 months to end January 2015	% Difference	PCC Verdict
Total Anti-Social Behaviour	2,533	2,485	- 1.9 %	😊

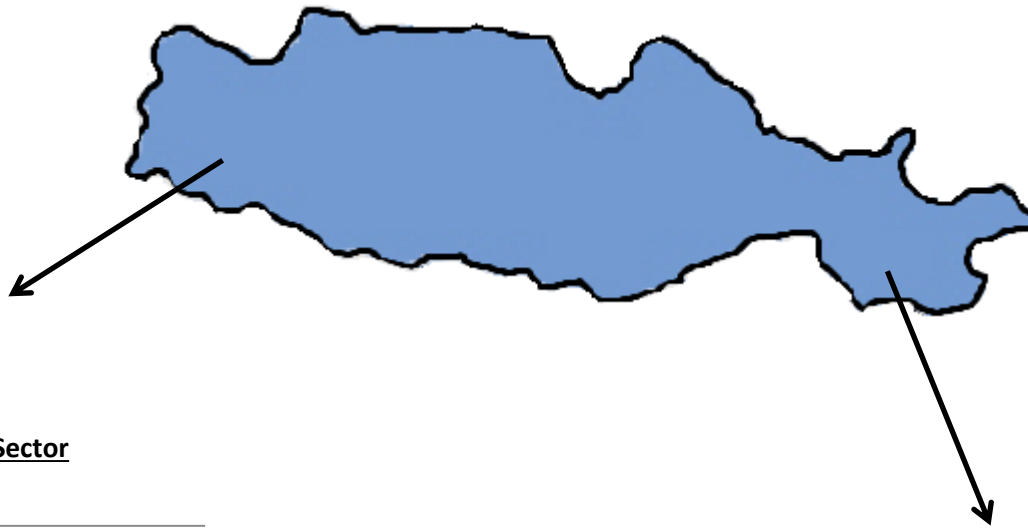
[Back to Map](#)

[Next Page](#)

[Return to Main Screen](#)

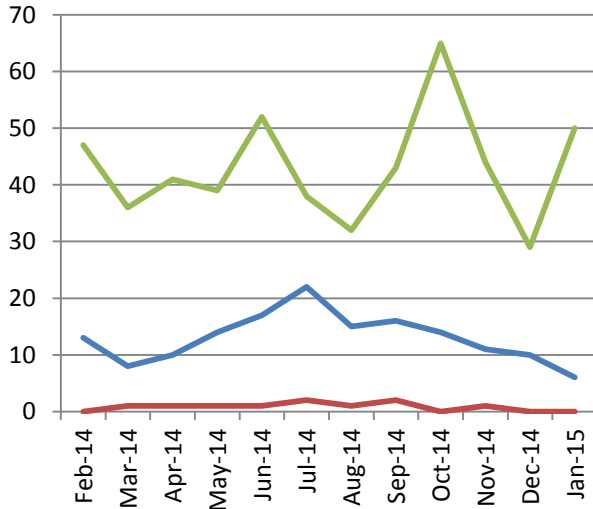
Community Priority 1 – To Tackle Anti-Social Behaviour

Crook



- Alcohol Related
- Drugs Related
- Youth Related

Crook Sector



	12 months to end January 2014	12 months to end January 2015	% Difference	PCC Verdict
Total Anti-Social Behaviour	1,471	1,419	- 3.5 %	😊

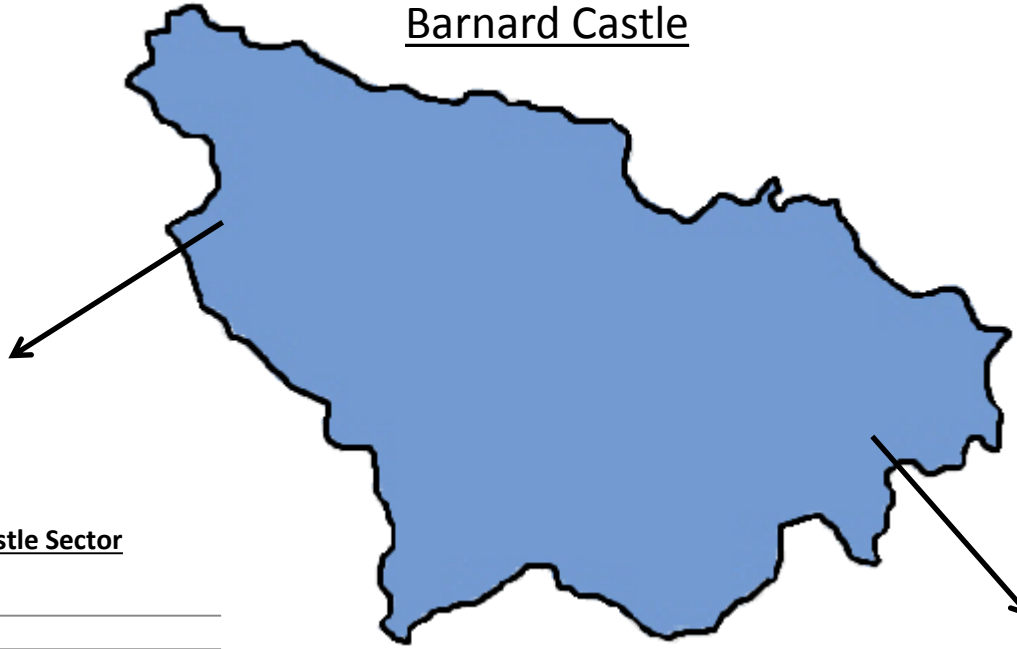
[Back to Map](#)

[Next Page](#)

[Return to Main Screen](#)

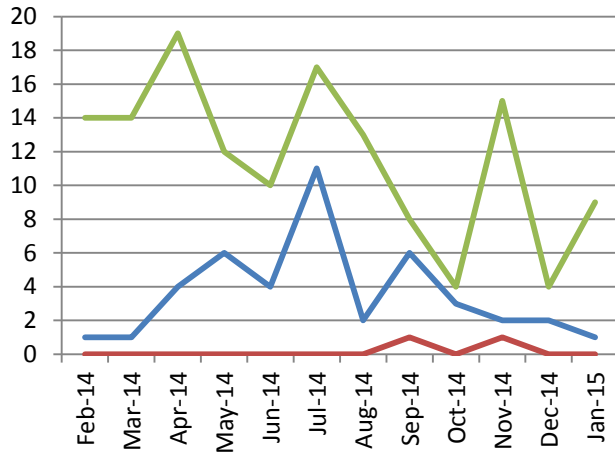
Community Priority 1 – To Tackle Anti-Social Behaviour

Barnard Castle



- Alcohol Related
- Drugs Related
- Youth Related

Barnard Castle Sector



	12 months to end January 2014	12 months to end January 2015	% Difference	PCC Verdict
Total Anti-Social Behaviour	469	387	- 17.5 %	😊

[Back to Map](#)

[Next Page](#)

[Return to Main Screen](#)

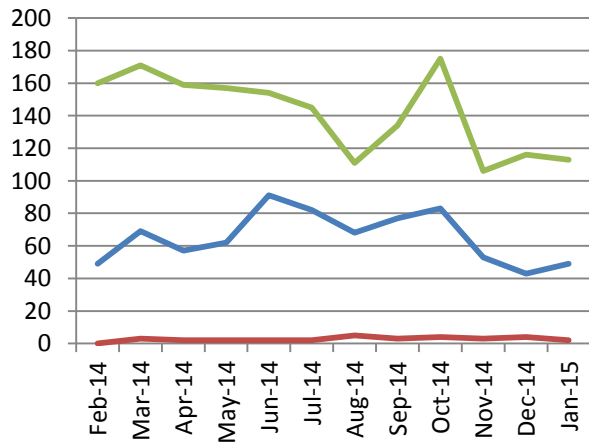
Community Priority 1 – To Tackle Anti-Social Behaviour

Darlington



- Alcohol Related
- Drugs Related
- Youth Related

Darlington Sector



	12 months to end January 2014	12 months to end January 2015	% Difference	PCC Verdict
Total Anti-Social Behaviour	5,246	5,303	+ 1.1 %	☹️

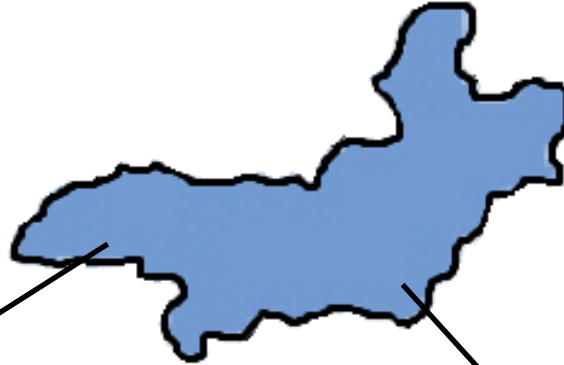
[Back to Map](#)

[Next Page](#)

[Return to Main Screen](#)

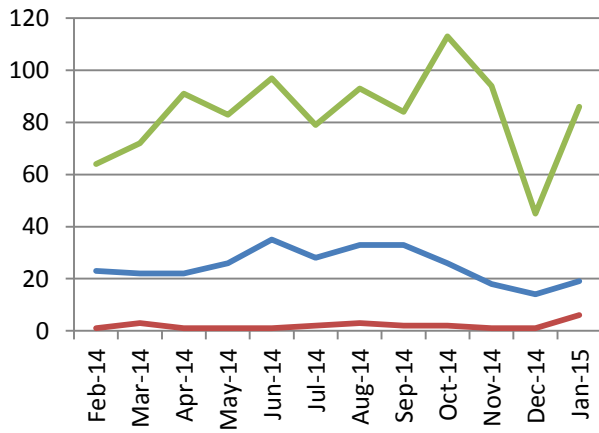
Community Priority 1 – To Tackle Anti-Social Behaviour

Newton Aycliffe



- Alcohol Related
- Drugs Related
- Youth Related

Newton Aycliffe Sector



	12 months to end January 2014	12 months to end January 2015	% Difference	PCC Verdict
Total Anti-Social Behaviour	2,644	2,688	+ 1.7 %	☹️

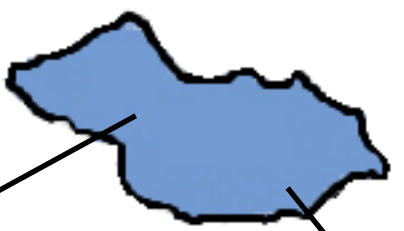
[Back to Map](#)

[Next Page](#)

[Return to Main Screen](#)

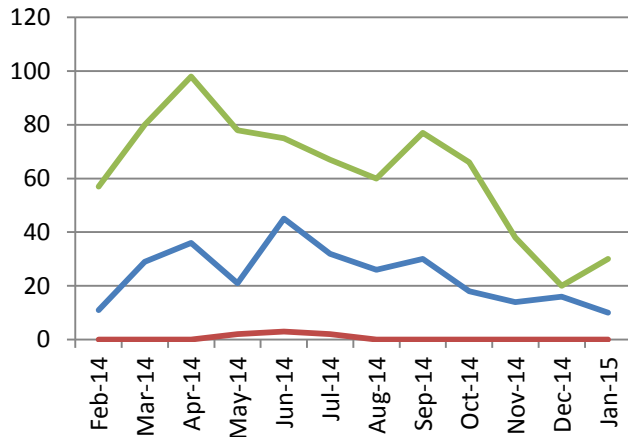
Community Priority 1 – To Tackle Anti-Social Behaviour

Spennymoor



- Alcohol Related
- Drugs Related
- Youth Related

Spennymoor Sector



	12 months to end January 2014	12 months to end January 2015	% Difference	PCC Verdict
Total Anti-Social Behaviour	2,163	2,114	- 2.3 %	😊

[Back to Map](#)

[Next Page](#)

[Return to Main Screen](#)

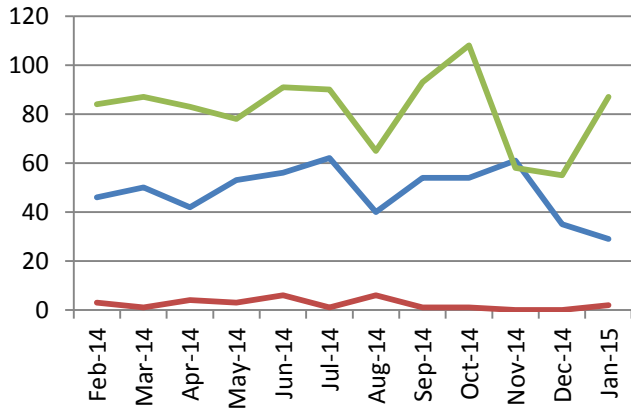
Community Priority 1 – To Tackle Anti-Social Behaviour

Durham



- Alcohol Related
- Drugs Related
- Youth Related

Durham Sector



	12 months to end January 2014	12 months to end January 2015	% Difference	PCC Verdict
Total Anti-Social Behaviour	3,218	3,378	+ 5 %	☹️

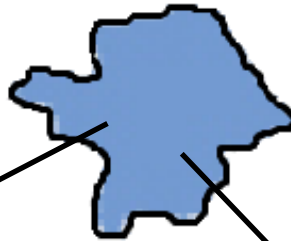
[Back to Map](#)

[Next Page](#)

[Return to Main Screen](#)

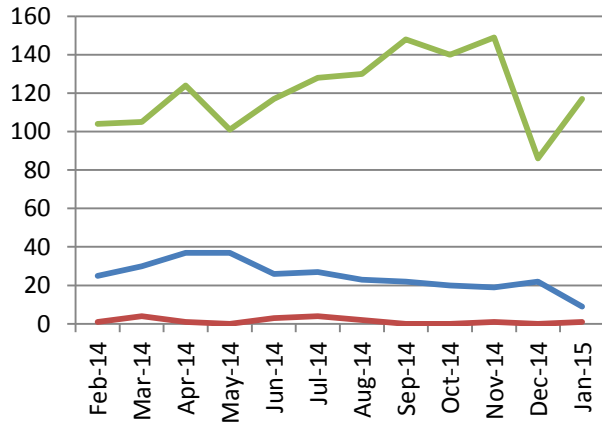
Community Priority 1 – To Tackle Anti-Social Behaviour

Peterlee



- Alcohol Related
- Drugs Related
- Youth Related

Peterlee Sector



	12 months to end January 2014	12 months to end January 2015	% Difference	PCC Verdict
Total Anti-Social Behaviour	3,485	3,432	-1.5 %	😊

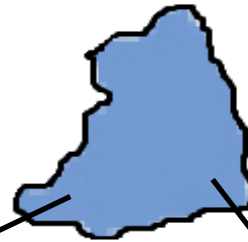
[Back to Map](#)

[Next Page](#)

[Return to Main Screen](#)

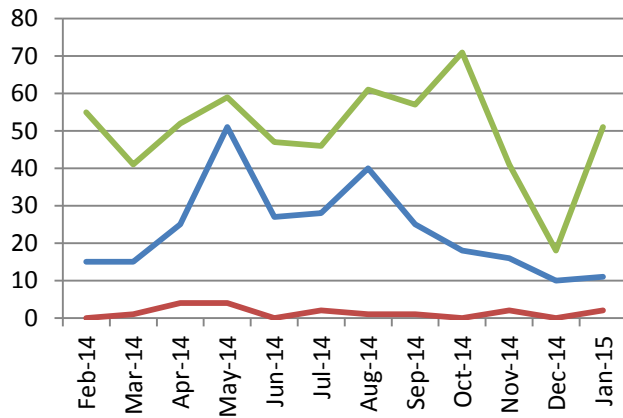
Community Priority 1 – To Tackle Anti-Social Behaviour

Seaham



- Alcohol Related
- Drugs Related
- Youth Related

Seaham Sector



	12 months to end January 2014	12 months to end January 2015	% Difference	PCC Verdict
Total Anti-Social Behaviour	1,932	1,895	- 1.9 %	😊

[Back to Map](#)

[Next Page](#)

[Return to Main Screen](#)

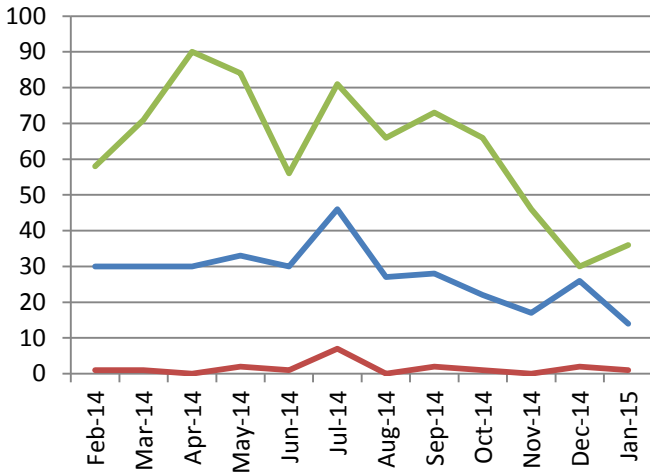
Community Priority 1 – To Tackle Anti-Social Behaviour

Chester le Street



- Alcohol Related
- Drugs Related
- Youth Related

Chester le Street Sector



	12 months to end January 2014	12 months to end January 2015	% Difference	PCC Verdict
Total Anti-Social Behaviour	2,242	2,150	- 4.1 %	😊

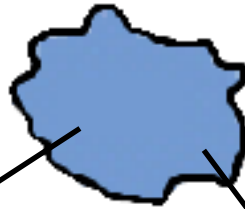
[Back to Map](#)

[Next Page](#)

[Return to Main Screen](#)

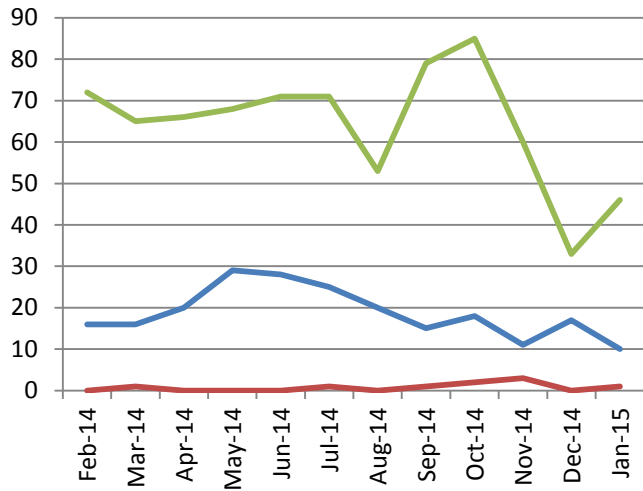
Community Priority 1 – To Tackle Anti-Social Behaviour

Stanley



- Alcohol Related
- Drugs Related
- Youth Related

Stanley Sector



	12 months to end January 2014	12 months to end January 2015	% Difference	PCC Verdict
Total Anti-Social Behaviour	2,060	1,840	- 10.7 %	😊

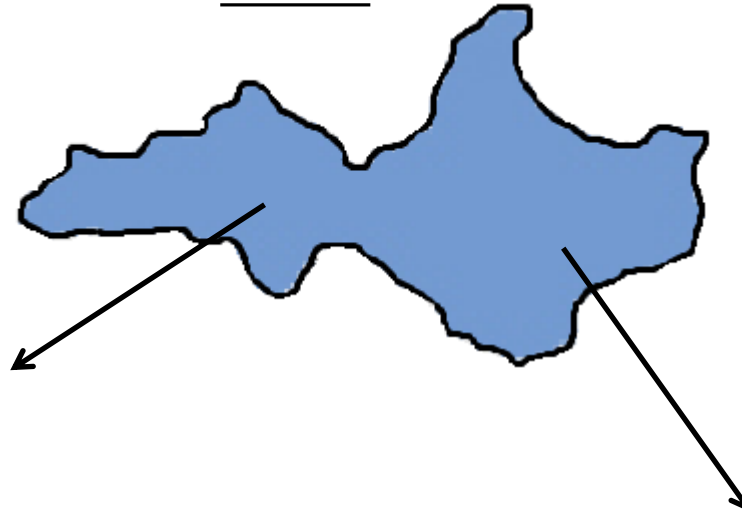
[Back to Map](#)

[Next Page](#)

[Return to Main Screen](#)

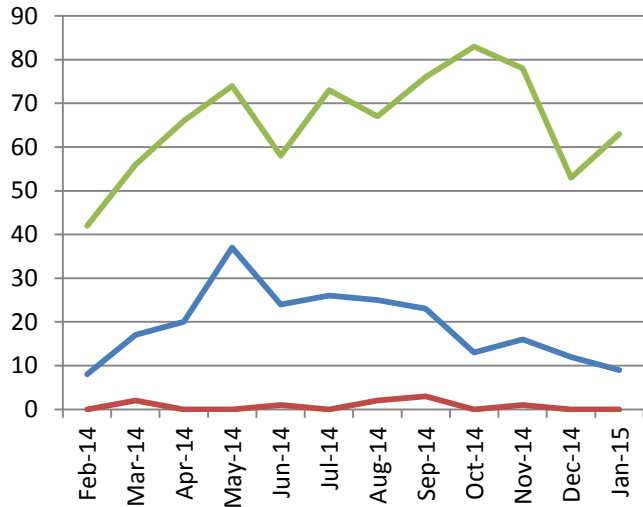
Community Priority 1 – To Tackle Anti-Social Behaviour

Consett



- Alcohol Related
- Drugs Related
- Youth Related

Consett Sector



	12 months to end January 2014	12 months to end January 2015	% Difference	PCC Verdict
Total Anti-Social Behaviour	1,956	2,010	+ 2.8 %	😊

[Back to Map](#)

[Next Page](#)

[Return to Main Screen](#)

Community Priority 2 – To Tackle the Harm Caused to Individuals and Communities by Alcohol and Drugs

Crime Type	12 months to end January 2013	12 months to end January 2014	% Difference 2013 - 2014	12 months to end January 2015	% Difference 2014 - 2015	PCC Verdict
Alcohol related incidents (% of all incidents)	Statistics are not comparable this far back as there was a change in recording	11.3 %	%	11.3 %	0	☹️
Drug offences	1,261	1,356	+ 7.5 %	1,414	+ 4.3 %	😊
Drug offences outcome rate	98.1 %	96.2 %	- 1.9 %	98 %	+ 1.8 %	😊

Due to fantastic targeted operations by the Constabulary, the number of recorded drug offences has increased, with excellent outcome rates. This is very encouraging. Although the percentage of alcohol related incidents has not increased, and the percentage relatively low, I feel this is certainly an area to also highlight, as a decrease could contribute to reductions across many crime types.

Local Survey	Quarter 1	Quarter 2	% Difference	Quarter 3	% Difference	PCC Verdict
% People who think people drinking and causing a nuisance in public spaces is a problem	36.7 %	38.3 %	+ 1.6 %	40.3 %	+ 2 %	☹️
% People who think underage drinking and sale of alcohol to youths is a problem	45 %	44.7 %	- 0.3 %	52 %	+ 7.3 %	☹️
% People who think drug dealing and abuse is a problem	36 %	38.7 %	+ 2.7 %	43.7 %	+ 5 %	☹️

Unfortunately, public perceptions around the problems caused by drugs and alcohol in our area are not as positive, and so this is an area I have highlighted to be focused on. However, I appreciate that public perceptions can be influenced by factors outside of the police's control.

Working to reduce the harm caused by both alcohol and drugs is an area in which I am working closely with partner organisations, including the Darlington Community Safety Partnership and Safe Durham Partnership, as we all share this priority.

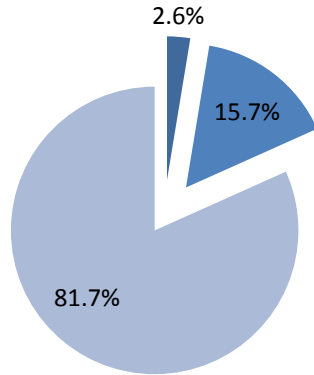
[Next Page](#)

[Return to Main Screen](#)

Community Priority 3 – To Improve Road Safety by Tackling Careless and Dangerous Driving, Speeding and Other Related Road Safety Issues

Road Traffic Accidents in 2013 (January - December)

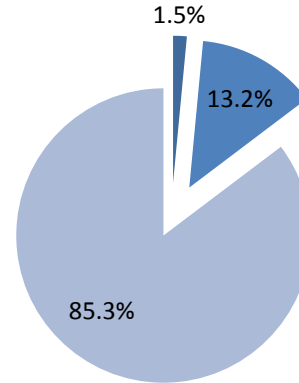
■ FATAL ■ SERIOUS ■ SLIGHT or NONE



Total: 216 out of 1179 road traffic collisions where person(s) killed or seriously injured

Road Traffic Accidents in 2014 (January - December)

■ FATAL ■ SERIOUS ■ SLIGHT or NONE



Total: 181 out of 1236 road traffic collisions where person(s) killed or seriously injured

A small percentage of the road traffic accidents in County Durham and Darlington in the last 2 years have resulted in fatal or serious injuries. It is positive to see these percentages declining, but I will endeavour to work with the Constabulary and partners to reduce numbers further.

Despite these low figures, the local survey responses show people still consider road safety issues to be a problem.

This is an area that requires joint working with partners and I will continue to support Durham County Council's proposal to implement 20mph speed limit zones.

I have encouraged the Constabulary to continue Community Speedwatch with the support of volunteers.

I have funded the purchase of traffic calming devices.

Local Survey	Quarter 1	Quarter 2	% Difference	Quarter 3	% Difference	PCC Verdict
People who think that dangerous driving is a problem	49.7 %	51 %	+ 1.3 %	53 %	+ 2 %	☹️
People who think that parking is a problem	47.3 %	52 %	+ 4.7 %	56.7 %	+ 4.7 %	☹️
People who think that speeding vehicles are a problem	67.3 %	65.7 %	- 1.6 %	66 %	+ 0.3 %	☹️


[Next Page](#)

[Return to Main Screen](#)

Community Priority 4 – To Make our Policing Service Visible and Accessible at all Times

Local Survey	Quarter 1	Quarter 2	% Difference	Quarter 3	% Difference	PCC Verdict
People who think the police in this area are easy to contact	61 %	59 %	- 2 %	59 %	0	☹️
People who are aware the police hold regular, public meetings, to discuss with members of the public the issues the police should be dealing with (PACT)	56 %	55 %	- 1 %	56 %	+ 1 %	☹️

The Constabulary has advised me they are aware that these figures are linked to overall public confidence and are working on increasing public awareness of what the police are doing. I have requested an update on police engagement with the community be provided to me quarterly, which I will be able to pass on to you.

	January 2014	January 2015	Difference	PCC Verdict
Police Officers	1330	1206	-124	 I am happy with the Constabulary's performance; not about the cuts to police officer numbers.
Special Constabulary	75	84	+9	
Police Staff*	1028	1041	-13	
Volunteers	275	257	-18	
Total	2708	2588	-120	

*Police staff includes PCSOs

I have made an explicit promise to protect neighbourhood policing. Despite numbers in police officers declining in the past year, recruitment is currently under way for new police officers and special constables. Furthermore, the [HMIC](#) Value for Money profile shows the Constabulary is spending more on having visible frontline officers rather than staff, compared to the most similar forces. The number of support staff is stable, rather than in decline, which is again positive at a time when the budgets are being cut. The capacity of the Constabulary has been upheld, once new recruits are taken into consideration, despite austerity. The Constabulary has reviewed its shift pattern in order to improve allocation of resources to peak periods of demand. The Constabulary is looking to introduce mobile data technology to increase visibility, by reducing the need for officers to return to stations.

[Next Page](#)

[Return to Main Screen](#)

High Quality Policing

Crime Type	12 months to end January 2013	12 months to end January 2014	Difference 2013 - 2014	12 months to end January 2015	Difference 2014 - 2015	Year-end Forecast	PCC Verdict
All Crime*	30,917	31,682	+ 2.5 %	32,326	+ 2%	+ 0.5 %	☹️
Violence Against the Person [†]	4,522	4,810	+ 6.4 %	6,417	+ 33.4%	+ 25.4 %	☹️
Sexual Offences [†]	365	735	+ 101.4 %	995	+ 35.4%	+ 13.5 %	☹️
Burglary	4,137	4,299	+ 3.9 %	3,985	- 7.3%	- 7 %	😊
Vehicle Crime	3,404	3,453	+ 1.4 %	2,825	- 18.2%	- 16.7%	😊
Criminal Damage (Inc. Arson)	7,078	6,911	- 2.4 %	6,669	- 3.5%	- 4.4 %	😊
Metal Theft	1590	1,298	- 18.4 %	1,019	- 21.5%	- 31.4%	😊

*Excludes Medomsley † Includes Medomsley

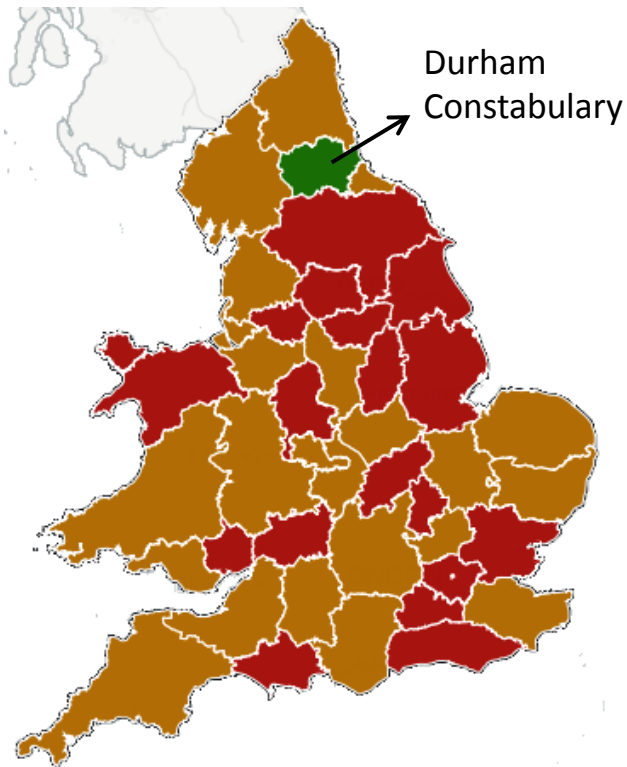
- The increase in violence against the person displayed in the figures above is resulting in a knock-on effect on the overall crime figures, however, I am assured that this is due to a change in the way this crime is recorded by the police rather than a growth in this crime type.
- The sexual offences statistics are inclusive of the [Medomsley Case](#), in which victims of historic incidents are now coming forward. These are recorded at the time they are reported rather than when they happened, resulting in an apparent increase. Although the 'all crime' figure does not include Medomsley, it does include a large number of other historic cases of abuse which have been reported in the wake of high profile incidents such as those involving Jimmy Savile and Rolf Harris. It is positive that victims of sexual offences, which are under-reported, are feeling more confidence in the Police to come forward.
- I will continue to monitor the level of crime, across all crime types, to ensure the Constabulary is continuing to respond to any changes and patterns, and maintain our area as one of the safest places in the country.

[Next Page](#)

[Return to Main Screen](#)

HMIC Inspections

Durham Constabulary is the country's top performing police force at investigating crimes



How effective is the force at investigating offending?

- OUTSTANDING
- GOOD
- REQUIRES IMPROVEMENT
- INADEQUATE (NONE RANKED)

In the first Annual Assessment of Policing in England and Wales 2014 (PEEL Report), HMIC assessed all 43 police forces in the country for effectiveness, efficiency and legitimacy.

I am incredibly happy to be able to report that Durham was the only force to be rated as **'outstanding'** at investigating crimes. The force was also judged to be 'outstanding' at tackling anti-social behaviour and 'good' at preventing offending and reducing crime.

This is excellent to see, and it is reassuring to all citizens that their police force is one of the best in the country. However, I want to stress that both myself and the Chief Constable are not complacent, and we will continue to strive to achieve even higher levels of service.

I am committed to protecting neighbourhood policing as I know it is important to the public. In May 2014, following a 'Policing in Austerity' report reviewing six forces, HMIC praised Durham for their commitment to having local officers designated to specific neighbourhoods where they can engage with communities, despite the financial difficulties being faced.

HMIC's Value for Money Report 2014 shows Durham Constabulary has higher detection rates, charges and cautions than the most similar forces, but lower crime figures.

[Next Page](#)

[Return to Main Screen](#)

Conclusions

- We are currently seeing a slight increase in crime, with a projected 2.6% increase at year-end, but this takes into account investigations, such as Medomsley.
- An increase in public confidence in the police is leading to increased reporting of crimes, which is very positive and will continue to be a focus.
- Victim satisfaction scores are very positive and something to be commended.
- Given the cuts to funding police forces nationwide are experiencing, this performance data shows the Force is efficiently using their budget to tackle offenders and reduce crime.
- It is excellent to have received such positive feedback from HMIC, supporting our positive conclusions.



[Next Page](#)

[Return to Main Screen](#)

Glossary

Anti-Social Behaviour	A wide range of behaviours, which cause alarm, distress or harassment to at least one person. They are separated into 3 categories: Personal (targeted at a specific individual or group), Nuisance (causing annoyance to the wider community) and Environmental - (incidents aimed at the physical environment). The force add flags highlighting alcohol, youth and drug related incidents. In some cases one incident can have more than one flag (e.g. both alcohol and youth related), which means it will be included in the figures on the local graphs twice (once in the alcohol and a once in the youth). But, this is not the case in the overall figures.
CSEW	The Crime Survey England and Wales is a survey about experiences of crime from around 38,500 members of the public.
Crime Statistics	All crime statistics in this document are from the Durham Constabulary recorded crime and incident database.
HMIC	Her Majesty's Inspectorate of Constabulary, inspect the Country's police forces.
Local Survey	Local survey conducted by Durham Constabulary.
Medomsley Case	Also known as Operation Seabrook, this is an investigation into serious sexual and physical abuse carried out by staff against inmates at the Medomsley Detention Centre near Consett, mainly in the 1970's and 1980's.
MP Surgery	A meeting for local people to attend and discuss any concerns with their local Member of Parliament (MP).
Mutual Gain	Multiple organisations working together increase social capital in certain areas to build strong communities and increase confidence
Park, Walk and Talk	In certain crime and anti-social behaviour hot spots police officers are to get out of their vehicles and talk to people, during peak crime times
Victim Based Crime	These are crimes against a victim, and are split into 5 categories: violence against the person, sexual offences, robbery, theft offences, criminal damage and arson offences
Victim Satisfaction Rates	These are obtained by the Constabulary through surveys with local victims.



- I am happy with the performance.



- I will be closely monitoring performance.
This is an area for continued focus.



- I am unhappy with the performance
and looking at ways to improve.

[Return to Main Screen](#)